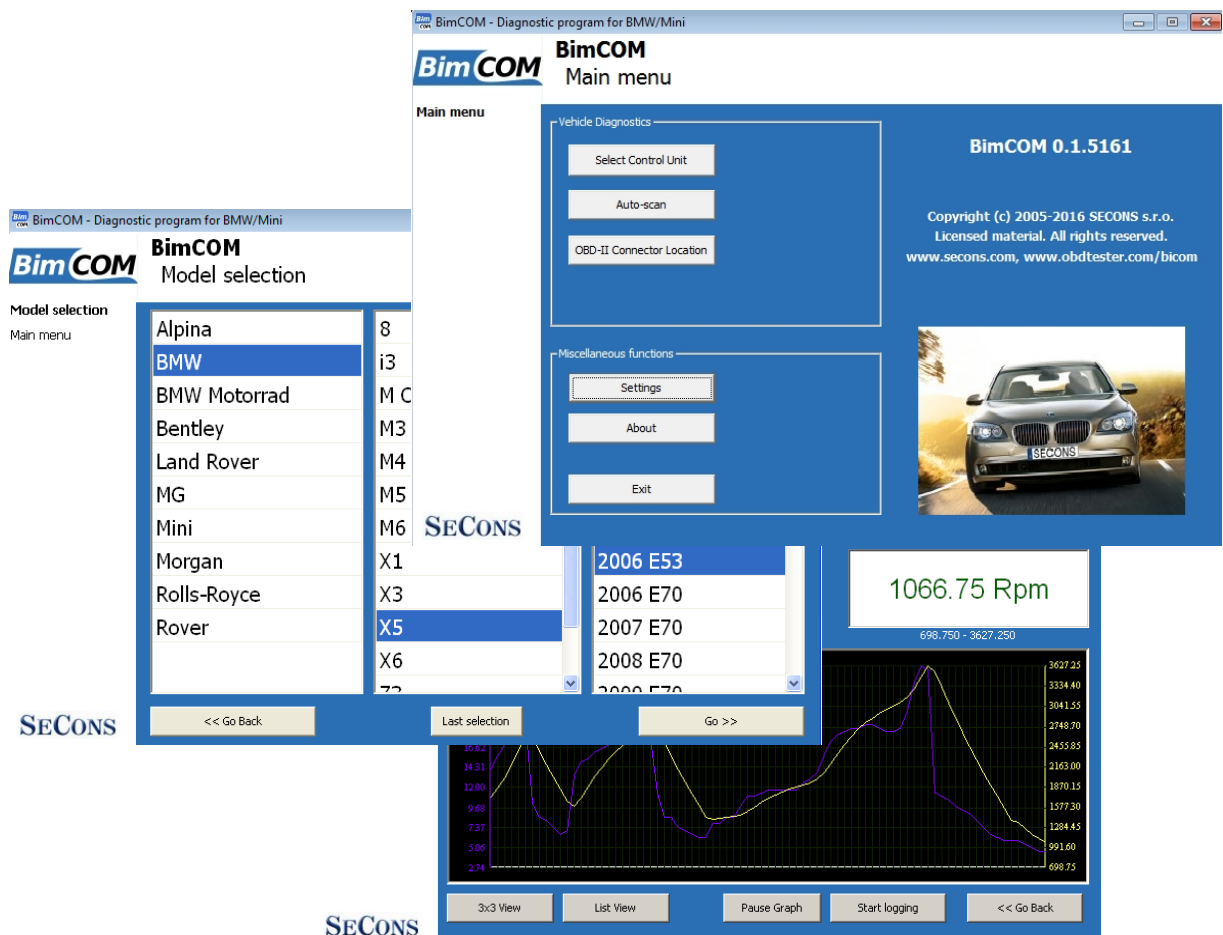


# BimCOM

## User manual

[www.obdtester.com/bimcom](http://www.obdtester.com/bimcom)



Copyright © 2004 – 2019 SECONS Ltd, <http://www.secons.com/>  
All rights reserved. Version 2019-11-13

SECONS Ltd. is not connected with **Bayerische Motoren Werke AG** in any way.

SECONS Ltd. is not liable for damages caused by using of BimCOM software.

Please read carefully this user manual before using the BimCOM software.

Before using the software please read license agreement.



# Table of Contents

1	<a href="#">Introduction</a>	5
1.1	<a href="#">BimCOM Key features</a>	5
1.2	<a href="#">Software updates</a>	5
2	<a href="#">BimCOM software and driver installation</a>	6
2.1	<a href="#">Microsoft Windows operating systems</a>	6
2.2	<a href="#">Microsoft Windows 8 driver installation</a>	7
2.3	<a href="#">Interface busy issue [Microsoft Windows]</a>	8
2.4	<a href="#">GNU/Linux System</a>	8
3	<a href="#">First steps</a>	11
4	<a href="#">BMW/Mini Diagnostic connectors</a>	12
4.1	<a href="#">OBD-II connector</a>	12
4.2	<a href="#">20pin connector</a>	12
4.3	<a href="#">10-pin motorbike connector</a>	13
5	<a href="#">Settings</a>	14
6	<a href="#">Connecting to control units</a>	16
6.1	<a href="#">Model selection</a>	16
6.2	<a href="#">ECU variant selection dialog</a>	16
6.3	<a href="#">“Missing” ECUs</a>	17
6.4	<a href="#">Communication protocols</a>	18
7	<a href="#">Auto-Scan</a>	19
8	<a href="#">Diagnostic functions</a>	20
8.1	<a href="#">Control Unit Identification</a>	21
8.2	<a href="#">Read fault code memory</a>	22
8.3	<a href="#">Clear Fault Codes</a>	22
8.4	<a href="#">Freeze Frame</a>	23
8.5	<a href="#">Measured values</a>	24
8.5.1	<a href="#">Graph display</a>	24
8.5.2	<a href="#">Display 3x3</a>	24
8.5.3	<a href="#">Display list</a>	24
8.5.4	<a href="#">Save to log</a>	24
8.6	<a href="#">Actuators activation</a>	25
8.7	<a href="#">Coding and programming functions (commands)</a>	26
8.7.1	<a href="#">Service reset and Condition based service</a>	26
8.7.2	<a href="#">Battery replacement</a>	26
8.7.3	<a href="#">DDE (Diesel) injector coding</a>	27
8.7.4	<a href="#">DPF regeneration</a>	27
8.7.5	<a href="#">ECU Reset</a>	27
8.8	<a href="#">ECU Configuration (“ECU Coding”)</a>	28
8.8.1	<a href="#">Edit</a>	29
8.8.2	<a href="#">Hex edit</a>	29
8.8.3	<a href="#">Revert to original</a>	30
8.8.4	<a href="#">Undo all changes</a>	30
8.8.5	<a href="#">Go back</a>	30
8.8.6	<a href="#">Load</a>	30
8.8.7	<a href="#">Save</a>	30
8.8.8	<a href="#">Copy</a>	30
8.8.9	<a href="#">Print</a>	30

8.8.10	<a href="#">Write configuration to ECU</a>	30
9	<a href="#">Reporting bugs and improvement requests</a>	31
9.1	<a href="#">How to create Debug Log</a>	31
9.2	<a href="#">How to create ECU Snapshot</a>	32
9.3	<a href="#">Unsupported control unit</a>	32
9.4	<a href="#">Problems with configuration</a>	32
10	<a href="#">Known issues</a>	33
11	<a href="#">Planned improvements</a>	33

## 1 Introduction

Thank you for purchasing the BimCOM diagnostic interface and software. BimCOM is professional tool for diagnostics of BMW / Mini vehicles. Please read carefully this User Manual before using the product.

We hope you'll find our products useful. In case you have any questions, problems or feedback please contact as at [support@secons.com](mailto:support@secons.com). We're here to help!

### 1.1 BimCOM Key features

- Fully multiplexed all-in-one smart USB2.0 interface
- Automatic ECU recognition
- Automatic vehicle scan
- ECU Identification
- Fault code (DTC) reading
- Fault code clearing
- Freeze frame display
- Measured values / live data
- Live data recording
- Diagnostic protocol printing
- Actuator tests
- Commands / Coding
- Configuration (“ECU Coding” in dealer tool)

List of supported cars and control units including diagnosis capability is available at <http://www.obdtester.com/bimcom-eculist>

### 1.2 Software updates

Software updates in diagnostic version are available for free. You can download them from <http://www.obdtester.com/downloads>. When downloading, type a serial number of your interface as user name. Password leave blank. The serial number can be found in *settings* of BimCOM after performing *test interface*, or on silver label of the interface. We recommend you to maintain software up-to-date, because updates provides support for new ECUs and fix various BimCOM issues. We also recommend you to update firmware in diagnostic interface every time you update the software. Firmware upgrade process is as follows:

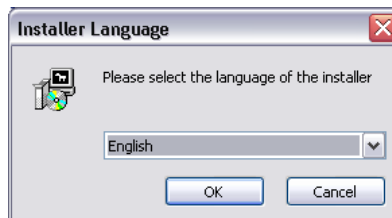
1. Connect your interface via USB to your computer.
2. Go to *settings* of BimCOM and perform *test interface*.
3. Click on "*Apply Changes*" button.
4. Click on "*Upgrade firmware*" button.

Do not disconnect the interface during upgrading the firmware.

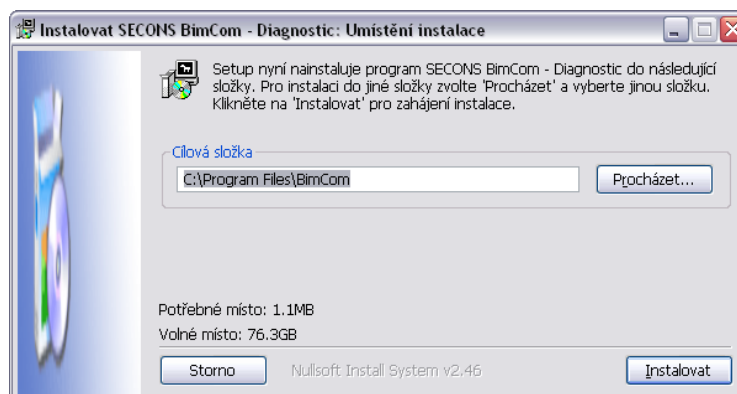
## 2 BimCOM software and driver installation

### 2.1 Microsoft Windows operating systems

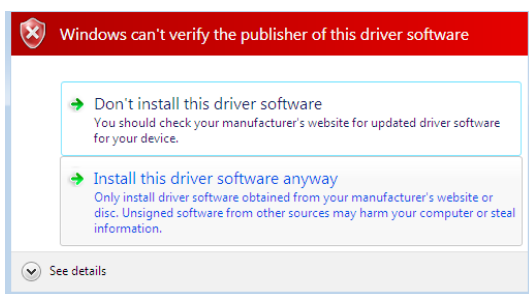
1. Insert BimCOM installation CD to your CD-ROM drive
2. Run installation file BimComSetup.exe
3. Choose language for the installer



4. Choose your destination folder for the BimCOM and click *Install* button and after successful installation click *Close* button.



BimCOM drivers are automatically updated during the BimCOM installation. When prompted to install „unsigned“ drivers, click on *Install this driver software anyway* (Microsoft® Windows® 7) or *Continue Anyway* (Microsoft® Windows® XP).



Microsoft® Windows® will automatically install drivers when you plug-in the BimCOM to USB port. Driver installation isn't required for operation on GNU/Linux system.

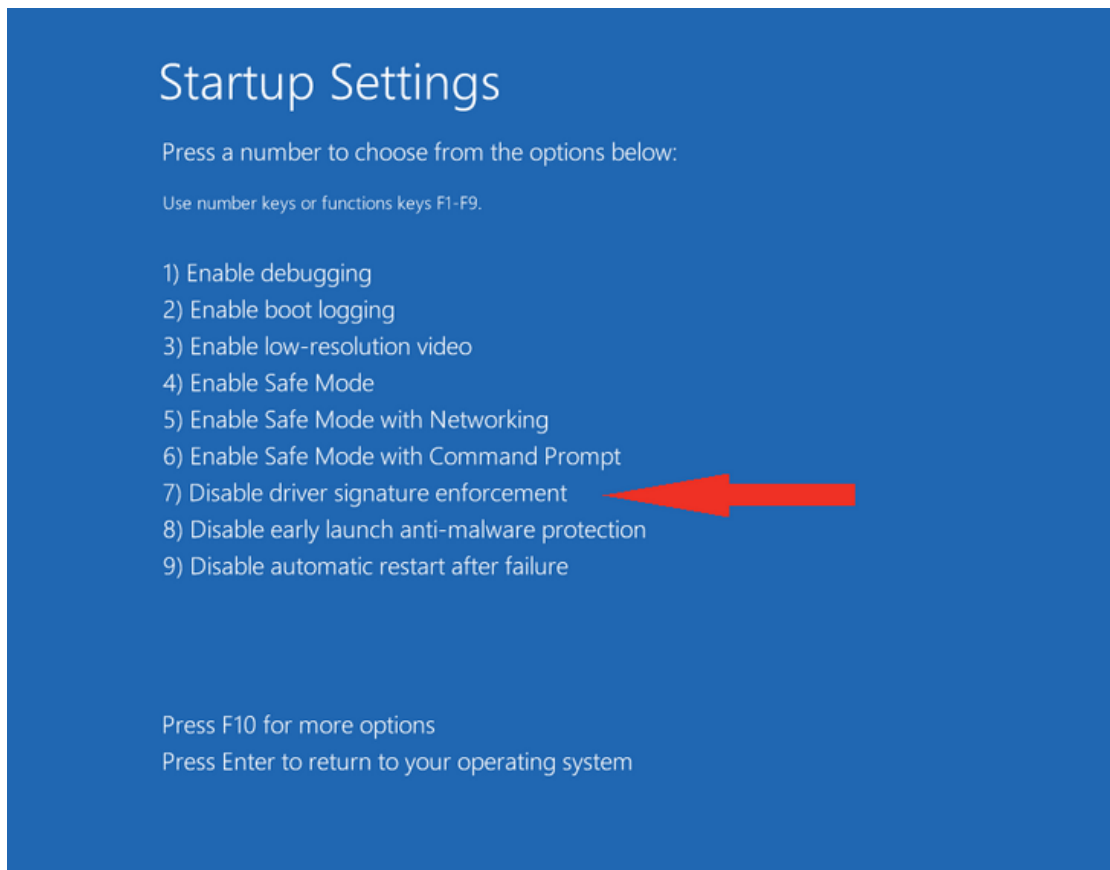
## 2.2 Microsoft Windows 8 driver installation

In case of problem with installing drivers on Windows 8 64-bit, please follow these steps:

1. Press Windows Key + R
2. In the window that appears, type: "shutdown.exe /r /o /f /t 00"
3. Press "OK" button
4. The System will restart to a "Choose an option" screen
5. Select "Troubleshoot" from "Choose an option" screen
6. Select "Advanced options" from "Troubleshoot" screen
7. Select "Windows Startup Settings" from "Advanced options" screen
8. Click "Restart" button
9. System will restart to "Advanced Boot Options" screen
10. Select "Disable Driver Signature Enforcement" (press number on keyboard for option shown on screen)
11. Once the system starts, install the diagnostic interface drivers as you would on Windows 7



Windows Vista & 7 required signed all .sys files (we use usbser.sys shipped by Microsoft with valid digital signature). Final version of Windows 8 requires also signed .inf file (which is not in our case). The above procedure helps to override unsigned .inf file. Once driver is installed, the program will work properly.



## 2.3 Interface busy issue [Microsoft Windows]

In case you receive error “Interface busy” while testing your interface, please make sure:

1. You're not running any modem, mobile phone, or printer monitoring application that blocks “COM ports” from being used by other applications.
2. You're not running Hella Gutmann software on the same PC. Process called “GMPortal.exe” prevents SECONS diagnostic applications from properly accessing the diagnostic interface. You may temporarily resolve this problem by running “Windows Task Manager”, right-clicking on GMPortal.exe process in “Processes” tab and selecting “End process”.
3. Software modem drivers do not block COM ports.
4. You have selected correct COM port (use “Device manager” button to find port number under “Ports (COM & LPT)” group).

## 2.4 GNU/Linux System

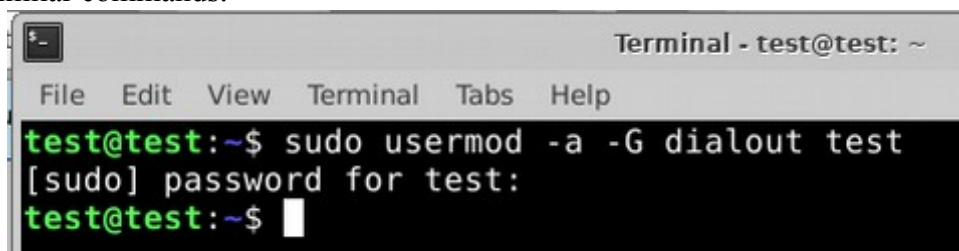
Our diagnostic application are tested to work under Linux. The applications can be run under Linux, BSD or Apple OS/X on Intel x86 using Wine environment. The installer and applications perform fully automated installation under these operating system.

### Important information:

- Only Ubuntu distribution 19.10 or later is supported using this guide, however other distributions that meet our requirements may work. For more information see [www.ubuntu.org](http://www.ubuntu.org)
- The diagnostic application runs under Wine which must be installed on the system. For more information see [www.WineHQ.org](http://www.WineHQ.org)
- Bluetooth connection is NOT supported natively on Linux (however with some effort you might be able to get it running, just instead of /dev/ttyACMx device use /dev/rfcommx).
- It is highly recommended to try the diagnostic application first under Microsoft Windows operating system to get familiar with it.

### Installation procedure:

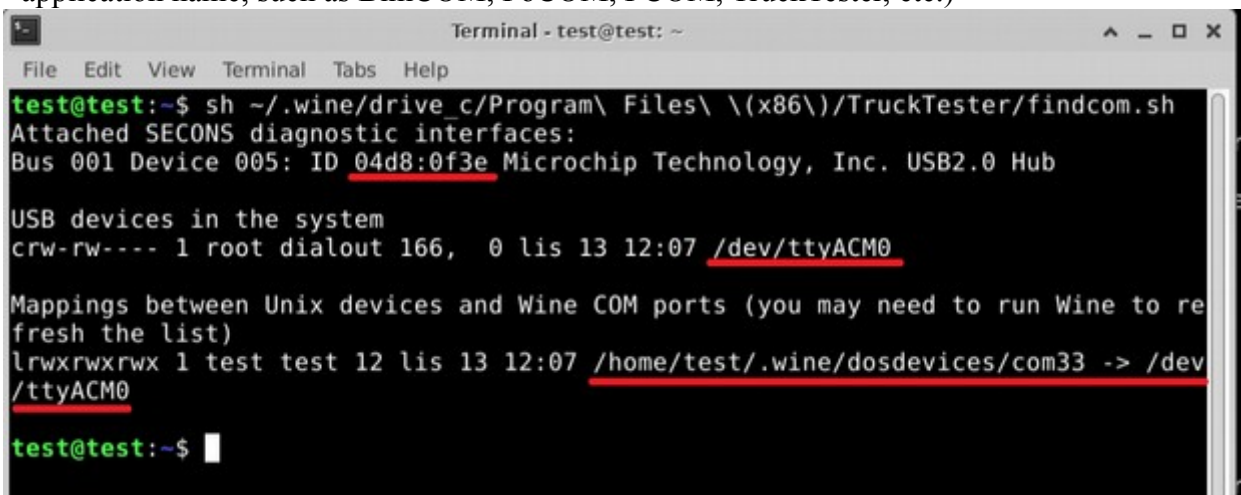
1. Wine 4.0 or later on an x86 system is required. You can install Wine on Ubuntu using “sudo apt install wine”). You can verify Wine version by running “wine –version” from terminal. If you are running 64-bit system you must have 32bit libraries installed (which is usually done automatically when installing Wine from repositories). Other Debian-derived distributions use similar commands.



```
Terminal - test@test: ~
File Edit View Terminal Tabs Help
test@test:~$ sudo usermod -a -G dialout test
[sudo] password for test:
test@test:~$
```



2. Add users who need to access the diagnostic interface to the 'dialout' group. Type "sudo usermod -a -G dialout username" (replace 'username' with you username, in the screenshot we have used 'test' user)
3. Log off from Xwindow session and login again.
4. Install the diagnostic applications (either using correct file manager association or from terminal, e.g. "wine ~/Downloads/PoCOMsetup.exe"). After the installation you should see the diagnostic application icon on the desktop and in start menu.
5. Now you need to figure out assignments between emulated "COMx" ports and respective Unix devices. For this we have created diagnostic script called "findcom", which you can run in terminal using comand "sh ~/.wine/drive\_c/Program\ Files\ \ (x86\)/APPNAME/findcom.sh" (replace APPNAME with actual diagnostic application name, such as BimCOM, PoCOM, FCOM, TruckTester, etc.)



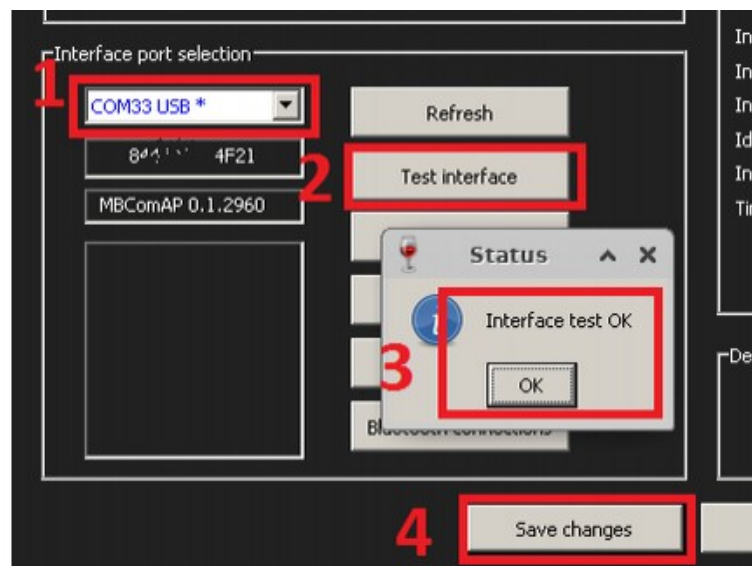
```

Terminal - test@test: ~
File Edit View Terminal Tabs Help
test@test:~$ sh ~/.wine/drive_c/Program\ Files\ \ (x86\)/TruckTester/findcom.sh
Attached SECONS diagnostic interfaces:
Bus 001 Device 005: ID 04d8:0f3e Microchip Technology, Inc. USB2.0 Hub

USB devices in the system
crw-rw---- 1 root dialout 166, 0 lis 13 12:07 /dev/ttyACM0

Mappings between Unix devices and Wine COM ports (you may need to run Wine to re
fresh the list)
lrwxrwxrwx 1 test test 12 lis 13 12:07 /home/test/.wine/dosdevices/com33 -> /dev
/ttyACM0
test@test:~$
  
```

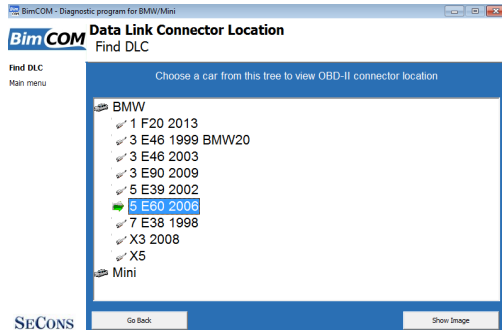
6. When you know COM port used in Wine (in the screenshots com33), configure the diagnostic application and test the interface



7. Save settings and you should be ready to go.
8. **Optional.** To override Wine's default device mapping, run `wine regedit` and create string entries in `HKEY_LOCAL_MACHINE\Software\Wine\Ports` where the entry name is the Windows device name and the entry value is the path to the Unix device. To make COM1 the first USB-attached serial port, create an entry with the name COM1 and the value `/dev/ttyACM0`. After editing the registry, shut down Wine with `wineserver -k` and the next time Wine runs a program, your changes will take effect.

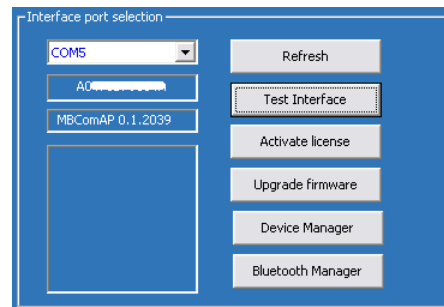
### 3 First steps

1. Connect the BimCOM interface to your computer.
2. Connect the BimCOM interface to OBD-II connector in the vehicle. You can use picture gallery for find it, available from main menu – *OBD-II Connector Location* button

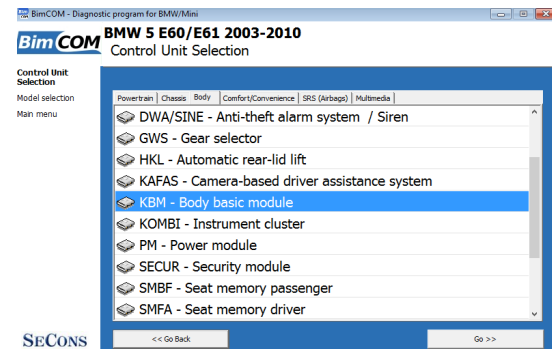
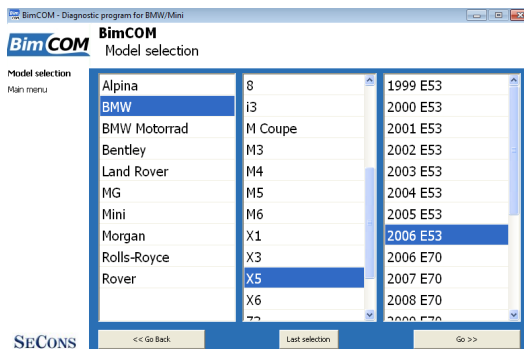


#### 3. Set-up BimCOM application

Select *Settings* from BimCOM main menu and configure interface port. After clicking on *Refresh* button, software should find port to which BimCOM interface is connected. Choose this port. Then click on *Test Interface* to make sure everything is OK. The software should display *Serial number* and licenses (partially hidden on screenshot on the right side).



4. Save settings and return to main menu.
5. Turn ON the ignition, but don't start the engine.
6. Select control unit by clicking on *Select Control Unit* button.
7. Select exact vehicle model.
8. In a new window, choose desired control unit.



9. If the control unit was recognized, you can use diagnostic functions now. In other case, you must select correct type of control unit. (chapter *Unrecognized Control Unit*)

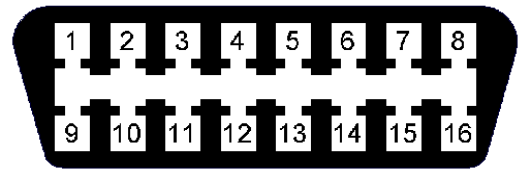
## 4 BMW/Mini Diagnostic connectors

Location of OBD-II and manufacturer-specific (OBD-I) connectors is available in DLC location database available from the BimCOM main menu.

### 4.1 OBD-II connector

Standard OBD2 connector is used usually since 2000.

Terminal 15	1	9	TD signal (RPM)
SIA reset signal	2	10	-
Ethernet RX+	3	11	Ethernet Rx-
Ground (GND)	4	12	Ethernet Tx +
Signal ground (GND)	5	13	Ethernet Tx -
D-CANH	6	14	D-CANL
ISO9141 K Line	7	15	ISO9141 L-Line
ISO9141 K Line	8	16	Battery voltage

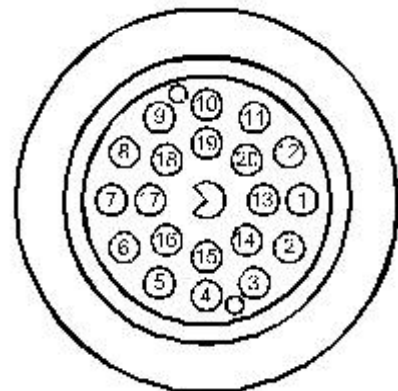


Notice: This pinout applies only to BMW/Mini models. Bentley and Rolls-Royce use different pinout, specific to each model.

### 4.2 20pin connector

If the vehicle is equipped with both OBD2 and 20-pin connector, always use 20-pin connector for diagnostics, because OBD2 connector allows only diagnosis of powertrain systems.

Pin	Description
1	Speed signal
7	Service interval
14	Battery +
15	ISO9141 L-Line
17	ISO9141 K-Line body
19	Ground
20	ISO9141 K-Line powertrain

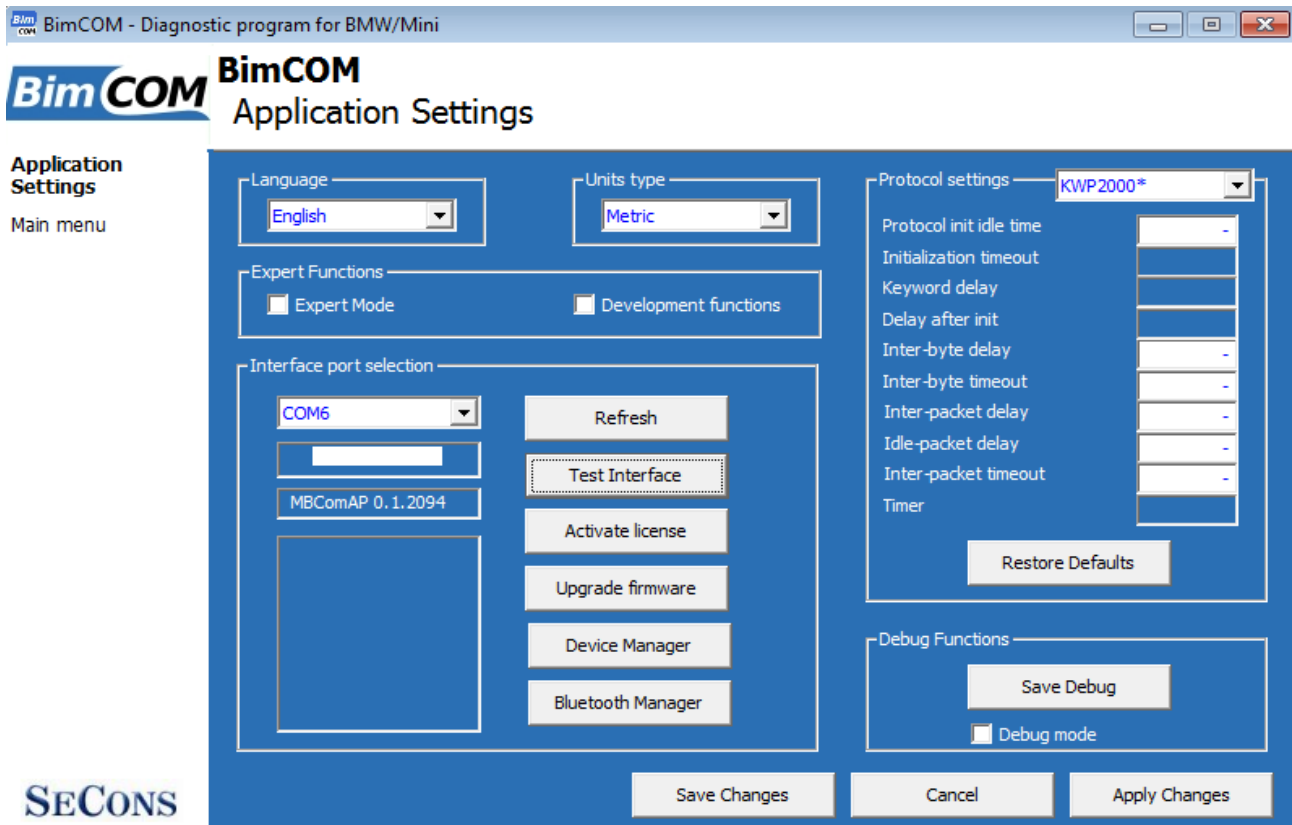


### 4.3 10-pin motorbike connector

Pin	Description
1	Terminal 15
2	Battery voltage
3	Ground
4	K-Line BMS/ABS

## 5 Settings

All functions in settings are described below.



### Language

Choose language of diagnostic application user interface in the drop down menu.

### Units type

You can choose metric or imperial unit system for measured values.

### Expert functions

Development functions - Enables additional functions under development. This setting is not saved before program exit and will be cleared on every application start. Do not enable this option unless requested by SECONS support staff as these functions may be dangerous to use without proper instructions.

Expert mode – Enables additional functions such as special coding functions or additional configuration options. These functions are intended for experienced technicians and are provided on “AS IS” basis, with absolutely no guarantee. It is highly recommended to leave this option unchecked. This mode also eliminates some warning messages and questions.

### Interface port selection

**Refresh** - this button refreshes COM port selection drop down list. Correct COM port number should be already chosen after connecting diagnostic interface via USB to PC and clicking on *Refresh* button. If not, choose correct COM port number from the list. It is needed in order to perform successful interface test.

**Test interface** – before each use of program, please test proper function of your connected interface by clicking this button. After successful test, you can see a serial number of your interface displayed below the COM port field, then firmware version and information about active licenses.

**Activate license** – this button is used for activating new license/s to use the program or special functions. Internet connection is required. Standard license is already activated for all interfaces before purchase.

**Upgrade firmware** – use this button to upgrade firmware in your diagnostic interface every time after installing the latest software version (available at [www.obdtester.com/downloads](http://www.obdtester.com/downloads)). Do not disconnect your interface during upgrading the firmware.


**Device Manager** – is used to finding out correct COM port number, or to reinstall drivers. Your device appears as “ELM-USB Interface (COMx)” under “Ports (COM & LPT)”.

**Bluetooth Manager** – is a preparation to upcoming bluetooth feature. The button is currently inactive.

## ***Protocol settings***


You can set various timings for each communication protocol. This is advanced feature used for example when problems occur with connection to control unit caused by slower ECU response and the like.

**Restore Defaults** – this button restores all modified timings of all protocols to default values.

 Changing protocol settings is not required before normal use of the program. You will be asked to make changes by our tech. support when solving your issue at [support@secons.com](mailto:support@secons.com) if necessary.

## ***Debug functions***

By clicking on **Save Debug** button, you can capture the latest data from elapsed communication between control unit and program into one file. Providing this file is required only by our technical support. Based on these data, we are able to monitor the whole process of performed operation and its correctness.

 Use of debug function is important for successful resolution of any program failure or verifying its causes. For more information on how to proceed, please read the following chapter [#9.Reporting bugs and improvement requests](#).

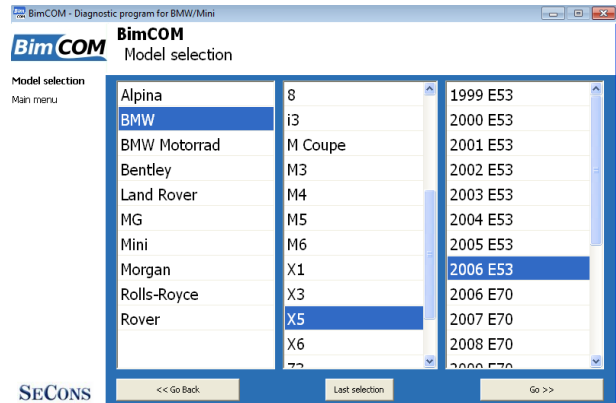
## 6 Connecting to control units

### 6.1 Model selection

Before is connection to control units (or performing auto-scan) possible, vehicle model selection is required.

Correct selection of vehicle model is essential for proper diagnostic functions.

Unlike many other BMW diagnostic tools BimCOM must uniquely recognize each control units in order to perform advanced tasks such as ECU configuration.



Some modules require fully charged battery in order to allow diagnosis. It is recommended to perform diagnostics with vehicle connected to a battery charger.



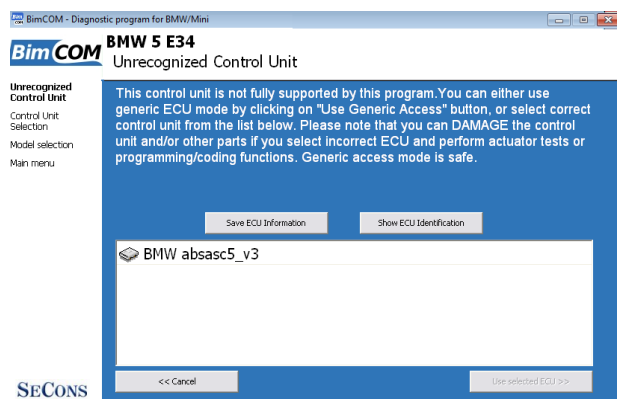
Some control units may go to 'sleep' mode after a couple of minutes; in such case please cycle the ignition to wake all control units up.

BimCOM may recognize control unit variant uniquely, however it is also possible that installed ECU variant is recognized in a different model. In such case warning message is displayed and diagnosis is possible, but we would like to ask you to send the ECU snapshot file to us in order to examine the problem. Please read chapter [8.3 Unsupported control unit](#)

### 6.2 ECU variant selection dialog

In a case BimCOM cannot automatically recognize ECU variant for the installed ECU, the following screen is displayed and user must select correct ECU variant.

You can get more information about ECU by clicking *Show ECU Identification* button.



- It is important to choose correct ECU variant for proper diagnostic functionality.
- If you make a mistake in identification, do not perform any of coding or programming functions: incorrect usage may damage ECU or vehicle components.

On Bentley and Rolls-Royce some control units cannot be automatically recognized, in that case



“Unrecognized control unit” window will be always displayed.



You can send us ECU snapshot file in order to add support for related ECU. Please see chapter [8.3 Unsupported control unit](#) for more information.

### 6.3 “Missing” ECUs

If you think we're missing some ECU type in our database, you can try auto-scan using a different model. This situation is possible in case BMW installed some specific features to a vehicle that is not normally seen. Please use the following table to select correct “alternative” model (with wider coverage, but same protocols and addressing).

The following table describes which models to use for scan for additional ECUs:

Scanned model	Alternative models for discovering “unusual” ECUs
All E3x, E4x, E5x models	3-series E46, 5-series E39, 7-series E38,
6 E63/E64, X1 E84, X6 E71	3-series E60, X5 E70
All F-chassis (Fxx models) inc. Mini F5x	7-series F01, 5-series F10, 3-series F30

If you find any ECU that is not reachable with correct model selected, please provide us with the ECU snapshot for further BimCOM improvements. Please see chapter [8.3 Unsupported control unit](#) for more information.

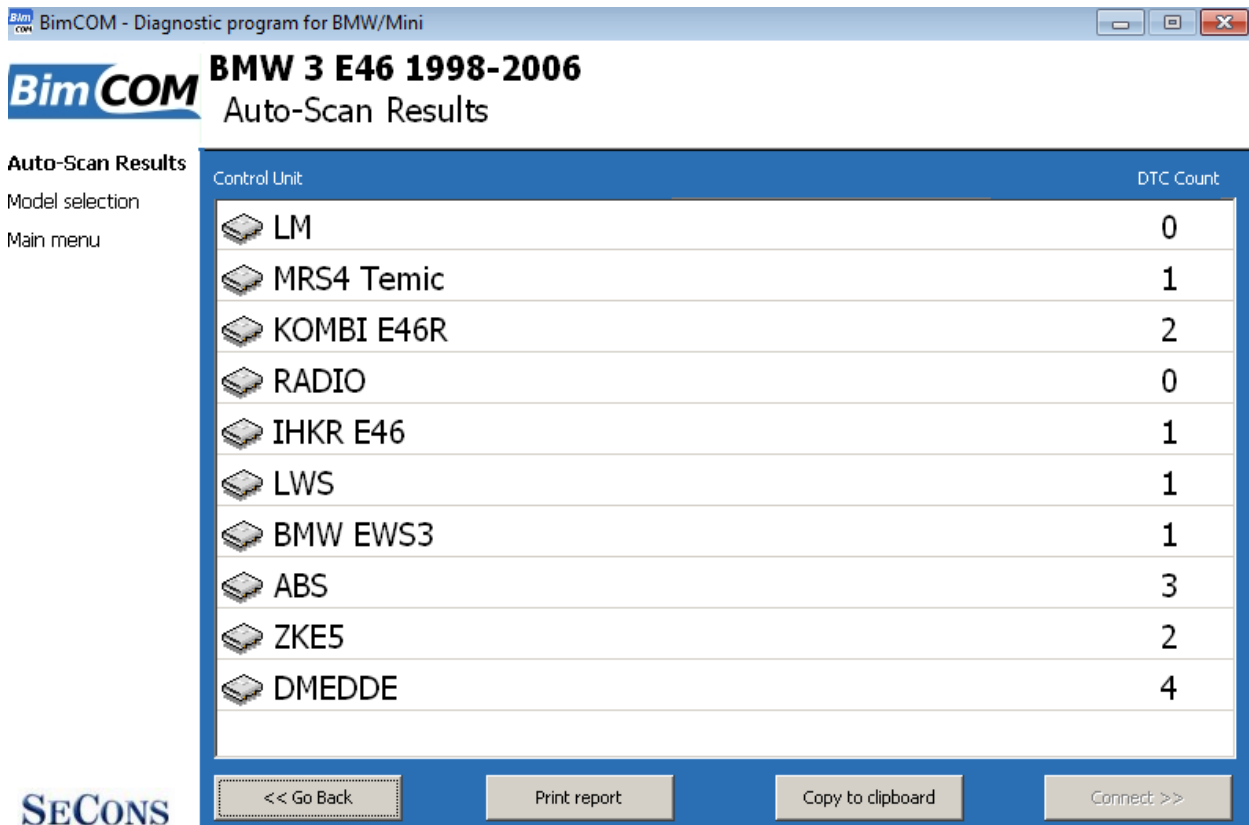
## 6.4 Communication protocols

BimCOM supports the following communication protocols:

KW71	Used on old DME (up to 1996) and DDE (up to 3.0, year 2000)
K1	Used for interior ECUs on E36 and earlier models
DS1	Used for interior ECUs on E3x / E4x
DS2	Used for interior ECUs on E3x / E5x / E5x
KWP2000*	Used for DME/DDE/ABS/EGS ECUs on E3x / E4x / E5x
BMW FAST	Used on ISO9141 diagnostics on E6x
ISO15765	Used on CAN-BUS diagnostics on E6x and Fxx
ISO14229	Used on Fxx (UDS protocol)
KW1281	Used on Bentley and Rolls-Royce
ISO9141	Used on Bentley and Rolls-Royce (DME, EGS)

## 7 Auto-Scan

This function scans for all known ECUs in selected vehicle, and shows the list of ECUs present in vehicle along with number of present or stored fault codes (DCTs).



**BimCOM** BMW 3 E46 1998-2006  
Auto-Scan Results

Auto-Scan Results  
Model selection  
Main menu

Control Unit	DTC Count
LM	0
MRS4 Temic	1
KOMBI E46R	2
RADIO	0
IHKR E46	1
LWS	1
BMW EWS3	1
ABS	3
ZKE5	2
DMEDDE	4

SECONS << Go Back Print report Copy to clipboard Connect >>

Autoscan may take a while for high-end models with many control units.

When autoscan is in progress, number of discovered control units and progress is displayed. Some models may reach even more than 50% without any found ECU.

On Bentley and Rolls-Royce models before 2005 auto-scan cannot read number of present fault codes on some control units. Please connect manually to such ECUs to read fault codes.

## 8 Diagnostic functions

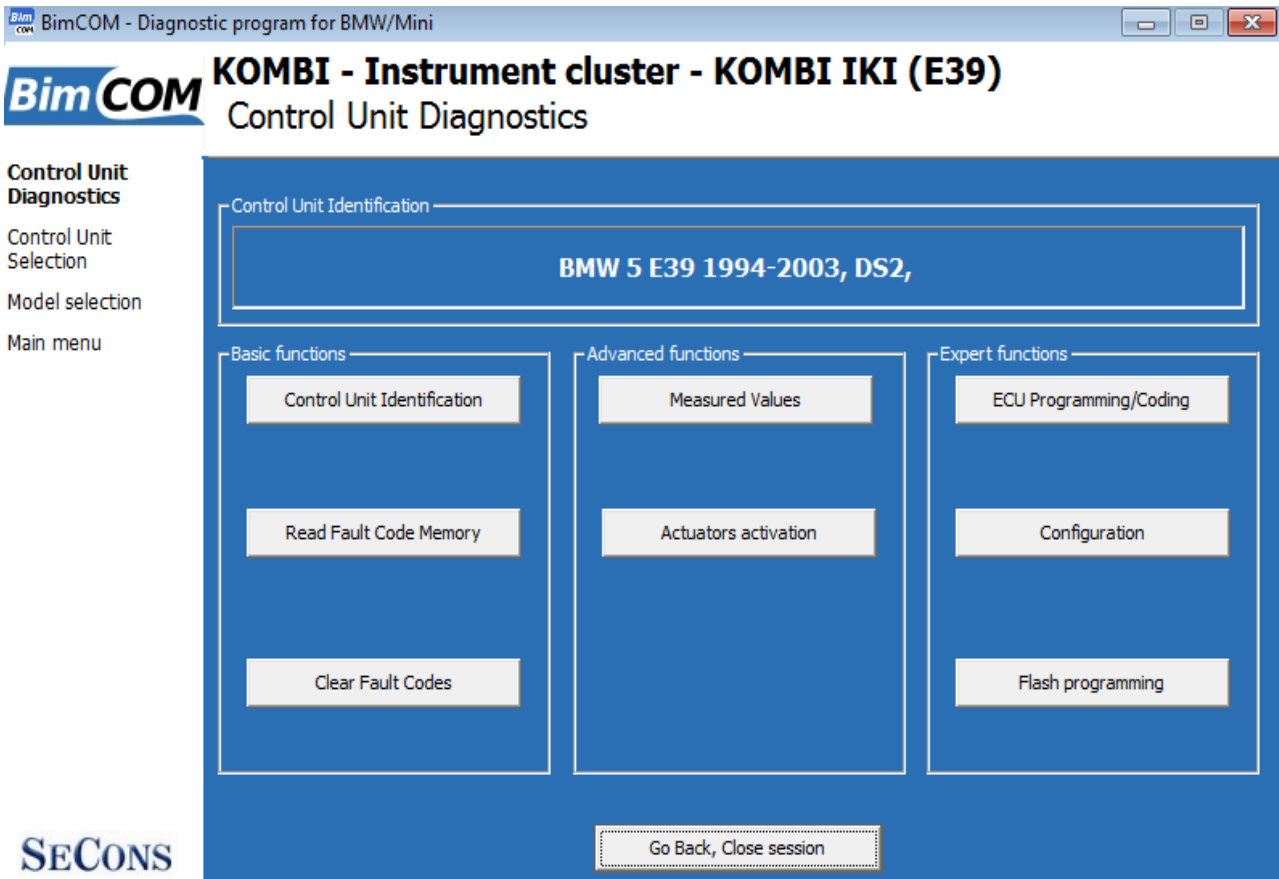
You can connect to ECU by choosing control unit from list of ECUs in selected vehicle or auto-scan listing.

If control unit was identified uniquely, diagnostic menu will be available immediately, otherwise it is necessary to select control unit variant as described earlier in this manual.

Diagnostic menu is divided into three parts. Basic functions, Advanced functions and Expert functions. Basic functions generally safe to use under any conditions. Please note that clearing (deleting) fault code memory may result in additional fault codes appearance even in different control unit(s). Also messages may appear on on-board computer display.

Advanced functions require deeper knowledge of car components. Be careful before activating any actuators – incorrect actuation may damage vehicle components.

Expert functions may have serious consequences if used improperly. Please refer to technical service bulletins and workshop service manuals before running any of these functions.



## 8.1 Control Unit Identification

This function can display only identification data accessed by ECU, for example:

- Part Number (only last 7 digits), SW part number, HW part number
- Hardware version
- Software version
- Coding (configuration) index
- Diagnostics index
- Bus index (not available on all ECUs)
- VIN number (not available on all ECUs and may be truncated)
- Protocol
- Other values such as manufacturer part number, depending on ECU



Please note that many vehicles do not have programmed VIN code or other data (such as programming date/etc).

BimCOM - Diagnostic program for BMW/Mini

**BimCOM** **KOMBI - Instrument cluster - KOMBI IKI (E39)**  
Control Unit Identification

Control Unit Identification  
Control Unit Diagnostics  
Control Unit Selection  
Model selection  
Main menu

Part number	6 90 61 22
Manufacturing date	1999/W49
Hardware version	18
Software version	19
Coding index	18
Diagnostics index	7
BUS: index	16
Manufacturer	VDO
Protocol	DS2
Bus Pin	K7

SECONS

<< Go Back      Save ECU Information      Copy Values      Print Values

You can print identification by clicking *Print Values* button or you can copy it to clipboard by clicking *Copy Values*.

## 8.2 Read fault code memory

This function allows you to read and display diagnostic trouble codes saved in control unit memory.

**BimCOM** KOMBI - Instrument cluster - KOMBI IKI (E39)  
Fault Code Memory

**Fault Code Memory**

- Control Unit Diagnostics
- Control Unit Selection
- Model selection
- Main menu

191	Control unit; internal error Line break Intermittent fault, Sporadic fault, External fault
206	Outside temperature sensor Intermittent fault, Sporadic fault, External fault
244	CAN: Communication Intermittent fault, Sporadic fault, External fault
199	Tank sensor 1 Intermittent fault, Sporadic fault, External fault
17	Acoustic transmitter disconnected Intermittent fault, Sporadic fault, External fault

**Functions**

Re-read fault codes    Clear Fault Codes    Freeze Frame

Copy Codes to Clipboard    Print fault codes

**Summary**

Stored DTCs:	Pending DTCs:
0	0
Present DTCs:	DTC History:
0	0

SECONS    << Go Back

*Important notice: Some ECUs do not support fault code reading.*

**i** "Static" error is simply the opposite of "Sporadic" and "Intermittent". When a DTC is marked Sporadic or Intermittent, it means the fault condition that set the DTC did not exist (or could not be detected) at time the DTC read-out was performed.

## 8.3 Clear Fault Codes

This function clears fault code stored in ECU memory.

Fault codes might appear again or under some conditions isn't possible to clear fault codes at all. It's possible that in the presence of some faults control unit doesn't allow to clear fault codes or fault is in no time written back to memory.

It is recommended to read memory by clicking *Re-read fault codes* button again.

**i** Please note that number of clearing fault codes may be limited for some control unit types.

### 8.4 Freeze Frame

*Freeze Frame* (also known as Snapshot or Environment data) function display selected measured values as present at occurrence of selected diagnostic fault code (DTC). This function is available from fault codes window.



Please note that BimCOM is not capable of decoding freeze frames on all ECUs. In such case raw hex dump is displayed. In order to improve this function, please report such ECUs to [support@secons.com](mailto:support@secons.com) - provide us with ECU identification data, listing from fault code + ECU snapshot (this file can be saved in Control Unit Identification by clicking on “Save ECU Information button”).

BimCOM - Diagnostic program for BMW/Mini

**BimCOM** **KOMBI - KOMBI IKI (E39)**  
Freeze Frame

**Freeze Frame**

- Fault Code Memory
- Control Unit Diagnostics
- Control Unit Selection
- Model selection
- Main menu

freezeFrame	faultCodeRepetitions	45.000000
-------------	----------------------	-----------

SECONS

<< Go Back      Copy Values      Print Values

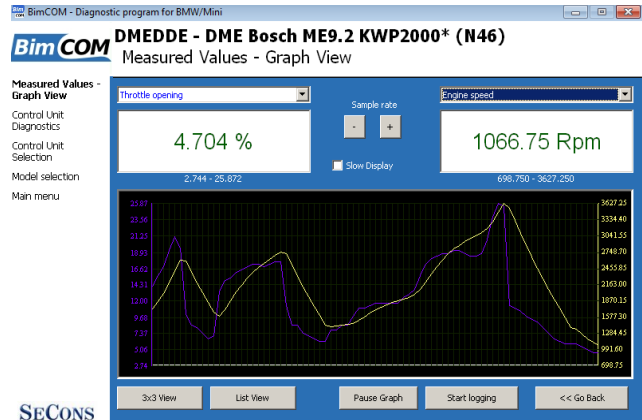
## 8.5 Measured values

Some control units are not equipped with all sensors: in this case, some sensors may show a limit values (minimum or maximum).

### 8.5.1 Graph display

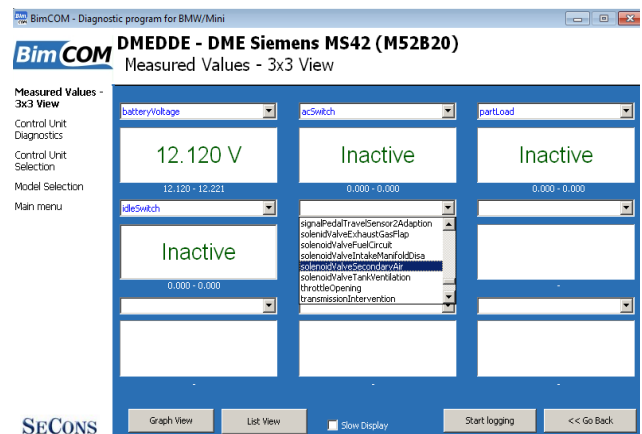
This function displays two measured values (also known as live data or sensor values) simultaneously. Measured parameters can be chosen from selectors at the top of the window.

Buttons + and – allow to accelerate or decelerate speed of the graph.



### 8.5.2 Display 3x3

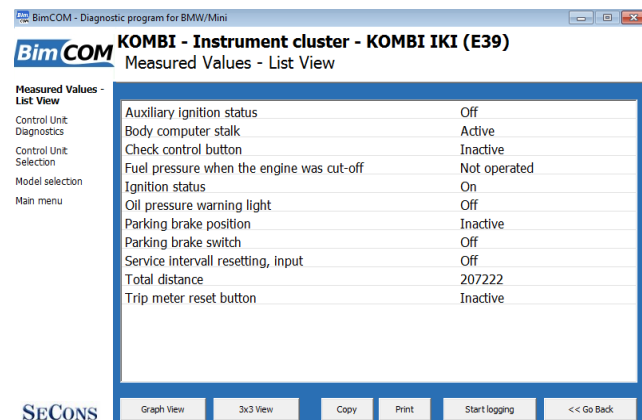
For measuring 9 value simultaneously, click on 3x3 View button.



### 8.5.3 Display list

To measure all available values simultaneously, click List view button.

Please note values means slower refresh rate.



### 8.5.4 Save to log

Measured values can be saved/logged to a file by clicking Start logging button. The log file is standard csv file and it is compatible with VagScope or can be imported to Microsoft Excel or OpenOffice Calc.

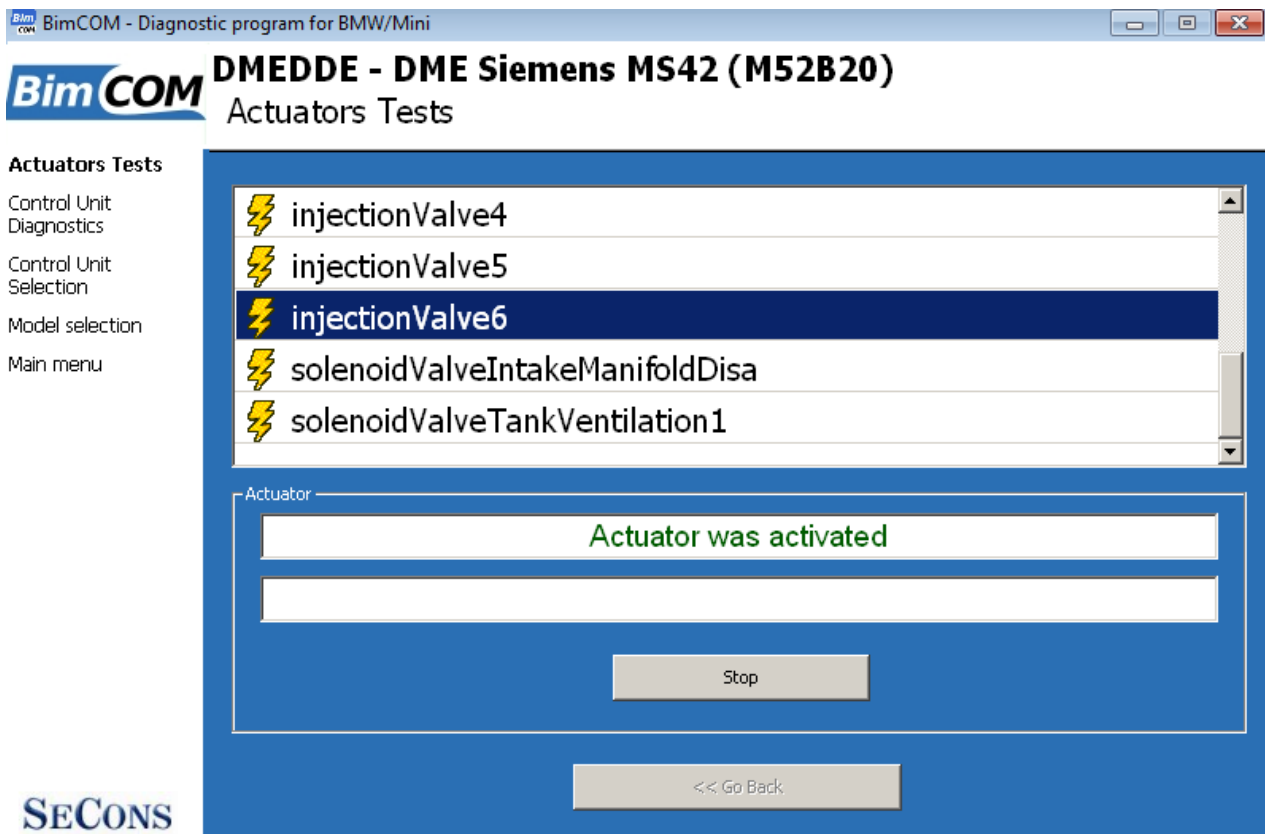


### 8.6 Actuators activation

This function can activate actuators and perform some actuators actions.

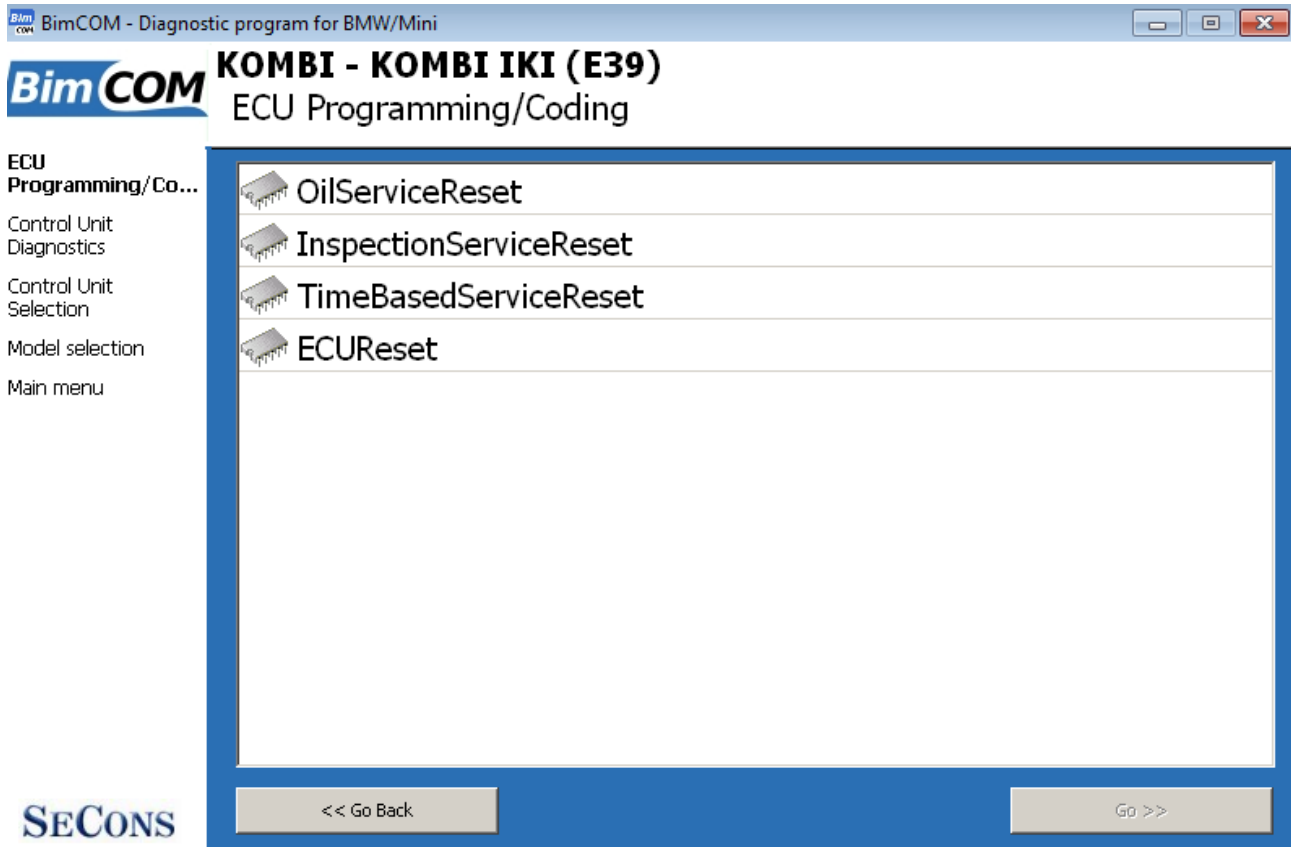
Some actuators cannot be terminated. In such case please turn ignition off to turn the actuators.

Some actuators run for specified time. In such case BimCOM displays progress, but it may not be possible to stop the actuator from application.



Make sure you understand consequences of activating ECU components. Also make sure that activation conditions (engine idle, engine running, etc.) are met. Always consult all tests with car repair handbook.

## 8.7 Coding and programming functions (commands)



More information about programming functions is available at [www.obdtester.com/downloads](http://www.obdtester.com/downloads). Please note that this function is currently under development.

Please note that this function does not perform ECU configuration (“ECU coding” in terms of BMW DIS / ISTA / INPA / NCS EXPERT).

### 8.7.1 Service reset and Condition based service

Pre E-60 systems use service reset in instrument cluster (KOMBI).

E6x and Fxx chassis use Condition-based service, which is variable interval service system. CBS adjustment/reset is performed in DME/DDE, ABS/ASC/DSC, EGS, KOMBI, IHKA.

### 8.7.2 Battery replacement

When changing battery type it is necessary to configure battery type in CAS module.

### **8.7.3 DDE (Diesel) injector coding**

Available on all Bosch DDE systems since DDE5. Each cylinder can be programmed independently.

### **8.7.4 DPF regeneration**

DPF regeneration is implemented only on a selected ECUs. Please contact SECONS support to add support to additional ECUs

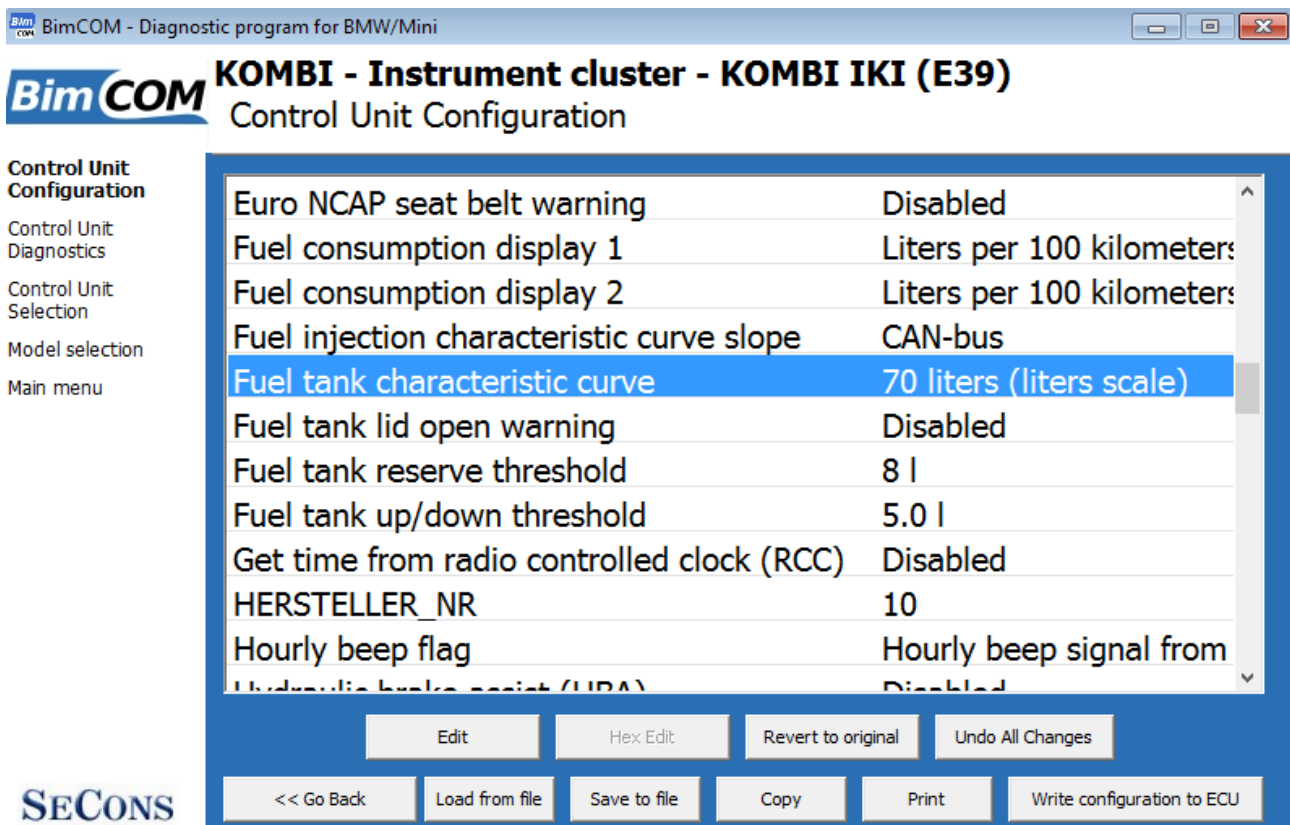
### **8.7.5 ECU Reset**

Used to reset ECU (similar to ECU power supply disconnection).

### 8.8 ECU Configuration (“ECU Coding”)

This function allows you to configure control unit parameters, or transfer configuration between ECUs after replacement. It is possible to reconfigure control unit(s) multiple times, thus allowing to re-use control units.

You can see listing of supported codings for each ECU in our BimCOM diagnostics coverage (please note that actual number of configurable parameters may vary due to different ECU variants).



Always save backup of configuration to a file before making any changes.

If no editable values are displayed, it is still possible to save or restore configuration via a file.



If complete configuration load fails for any reason, it is still possible to continue with ECU configuration data subset.

The configuration data retrieved from the control unit are verified for validity after loading.

First check is performed to validate data consistency (such as data check-sum). If data consistency

validation fails, prompt if you really want to continue is displayed. This usually happens only when control unit is not yet programmed, or data are corrupt. The diagnostic application is able to fix this problem when writing new configuration to the control unit. It is possible to continue, however writing incorrect data to the control unit may damage either control unit or vehicle components.

Then all data are checked for validity. If invalid configuration option is found, warning message is displayed.

The window displays all user changeable values.

Meaning of colors

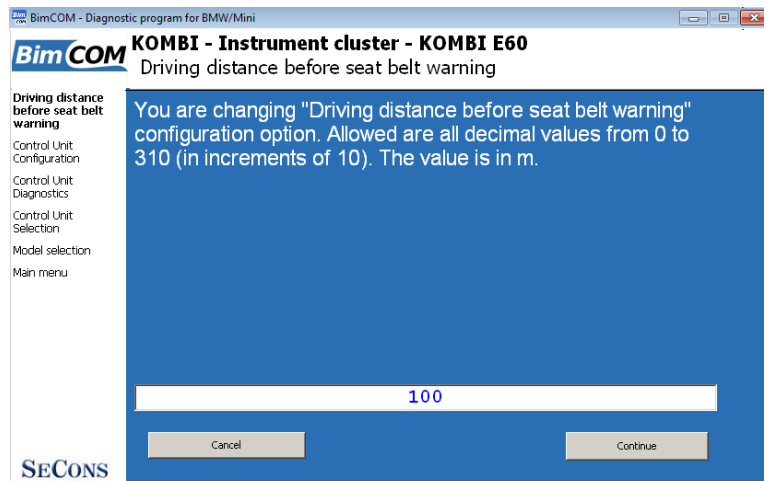
Grey line	Read-only value (cannot be changed)
Black line	Editable text, original state (not yet edited)
Green value	Editable, changed by user
Red	Un-decoded value
Violet/pink value	Un-decoded changed value

### 8.8.1 Edit

This button allows you to change currently selected value.

Detailed instructions on valid value format and it's range is displayed.

After editing please check displayed value is correct as it may change – diagnostic application may adjust the value to meet the control unit requirements (the value may get rounded, clipped, etc.)



### 8.8.2 Hex edit

Available only in expert mode or for values that cannot be correctly decoded. This function is used to directly edit binary representation of the value.

### **8.8.3 Revert to original**

Reverts currently selected value to original state.

### **8.8.4 Undo all changes**

Reverts to original configuration (as retrieved from the control unit when entering this window).

### **8.8.5 Go back**

Returns back to diagnostic menu.

### **8.8.6 Load**

Loads configuration from a file. Data file is checked if matches the connected control unit.

### **8.8.7 Save**

Saves configuration to a configuration file (for restore or configuration transfer) or to a text file (report).

### **8.8.8 Copy**

Copies configuration to operating system clipboard.

### **8.8.9 Print**

Prints configuration.

### **8.8.10 Write configuration to ECU**

Programs configuration to the control unit. Before writing new configuration to ECU always check each value if it has desired state.

The diagnostic application will automatically adjust data checksum or other dependencies.

The control unit may reject new configuration if configuration data are not applicable (or are generally incorrect) for the ECU. In such case writing original (unchanged) data should succeed.

## 9 Reporting bugs and improvement requests

Our customers can take advantage of our full technical support for free. You can contact our technical support at [support@secons.com](mailto:support@secons.com) with any technical questions and requests.

In case you encounter to failure of any program functions (e.g. fault codes reading/clearing, coding functions, actuator test, connecting to ECU, test interface, ...), or you miss some function or some function does not work sufficiently, please follow the steps below.

Note:

Before sending support request for failing operation, please make sure you have met all conditions required for the operation (e.g. you are entering correct data, correct engine temperature for DPF regeneration, correct number of keys for engine start, etc).

In case of communication issues we recommend to check diagnostic plug connection and retry procedure at least once, connection problems may result in erratic communication issues.

**Please, prepare the following data in your email before sending your request to our technical support:**

1. Detailed description of failure or your improvement request
2. Vehicle description - VIN code, model, manufacture year, engine type
3. Attach **Debug Log** (in case that required function doesn't work properly). This file captures data from the latest communication between program and ECU, so we can detect failure causes.
4. Attach **Snapshot** of tested ECU – this file contains important information about tested control unit In all cases please attach snapshot of **INJ (engine) + BSI (body computer)**.

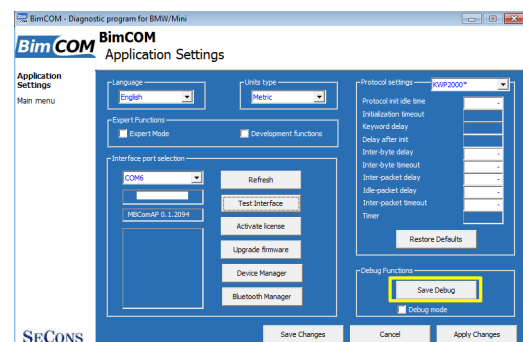


### 9.1 How to create Debug Log

It is necessary to perform operation that is not working correctly first. Once failure occurs, go back directly to settings in main menu (do not close the program). Click on “Save Debug” button. Name and save the file into well known directory in your computer.

Enable “Debug mode” check box only at our special request.

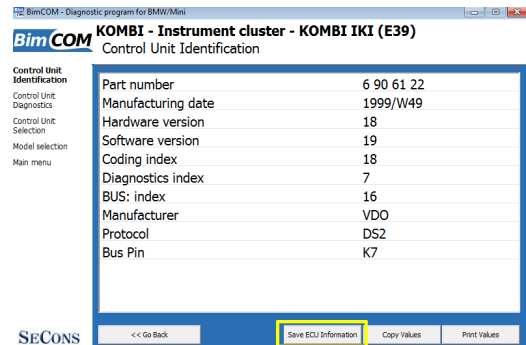
*This function is used to tell program enable special functions in diagnostics interface and to log more data than required for normal operation.*





## 9.2 How to create ECU Snapshot

After connection to tested control unit, click on “Control Unit Identification”. In following screen, click on “Save ECU Information”. Choose directory to save the file and confirm. Saving may take a few minutes.



## 9.3 Unsupported control unit

In case you are prompted with “Unrecognized control unit” window and:

- the installed ECU is not available in the listing
- or you are not sure which control unit to choose
- or you wish to get the ECU automatically properly identified in next BimCOM version
- or you just want to help us to improve BimCOM

We will be more than happy to add any unsupported or unrecognized control unit to next BimCOM version. We are usually able to do this within one or two working days based on so called “ECU snapshot file”:

From “Unrecognized ECU” window or “Control Unit Identification” window (after connecting to ECU), please click on “Save ECU Information” button and save the file to your computer.

Please send the generated file(s) to [support@secons.com](mailto:support@secons.com).

## 9.4 Problems with configuration

In case you encounter any difficulties with configuration (coding) data, please provide the following:

- Debug log
- ECU snapshots
- Listing of original ECU configuration data (either via saving to a file or “Copy to clipboard”)



## **10 Known issues**

- Freeze frame functionality is not guaranteed on all ECUs
- Configuration functionality will be improved in future versions
- Problem with KWP2000\* connection on some models (e.g. E39)

## **11 Planned improvements**

The following improvements of user interface are planned for next release:

- Resizable windows
- Font size change option
- Screenshot to PDF or PNG
- Live data logging improvements
- Connection to online services